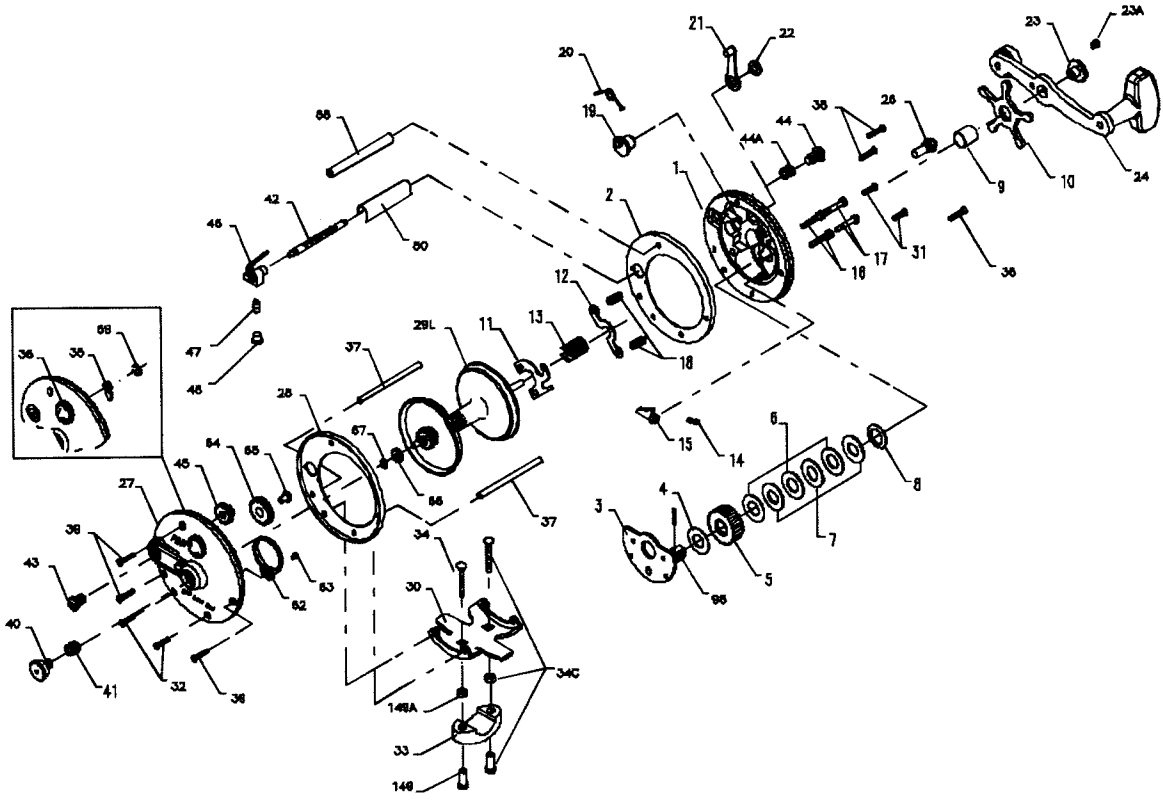




PARTS LIST FOR MODELS 209 AND 309



KEY NO.	MODEL 209 PART NO.	MODEL 309 PART NO.	DESCRIPTION
1	001 209	001 309	Right Side Plate
2	002 209	002 309	R.S. Ring
3	003 155	003 309	Bridge w/Sleeve
4	004 155	004 060	Fiber Washer
5	005 155	005 500	Main Gear
6	006 155	006 309	Drag Washer (3 req.)
7	007C155	007C500	Drag Washer (Metal Set)
8	008 060	008 060	Tension Washer
9	009 060	009 060	Spacing Sleeve
10	010 060	010 049	Star Drag
11	011 155	011 060	Eccentric Jack
12	012 155	012 060	Pinion Yoke
13	013 155	013 085	Pinion Gear
14	014 099	014 099	Dog Spring
15	015 209	015 309	Dog
16	016 060	016 060	Lower Bridge Screw (2 req.)
17	017 060	017 060	Upper Bridge Screw (2 req.)
18	018 060	018 060	Clutch Spring (2 req.)
19	019 209	019 309	Eccentric
20	020 155	020 060L	Eccentric Spring
21	021 209	021 309	Eccentric Lever
22	022 060	022 060	Eccentric Screw
23	023 060	023 060	Handle Screw
23A	110 060	110 060	Handle Lock Screw
24	024 310	024 066	Handle
26	026 155	026 060	R.S. Bearing
27	027 209	027 309	L.S. Plate
28	028 209	028 309	L.S. Ring
29L	029L209	029L309	Aluminum Spool
30	030 066	030 066	Stand
31	032 022	032 016	R.S. Stand Screw (2 req.)
32	032 022	032 016	L.S. Stand Screw (2 req.)
33	033 113	033 113	Rod Clamp
34	034 045	034 045	Ringed Rod Clamp (Optional)
34C	034C045	034C045	Clamp Screw (Only)
35	035 155	035 060	Clamp Screw w/Nuts
36	036N209	036N209	Click Tongue
37	037 160	037 065	Click Button
38	038 008	038 008	Frame Post (2 req.)
39	038 008	038 008	R.S. Post Screw (3 req.)
40	040 060	040 060	L.S. Post Screw (3 req.)
41	041 060	041 060	L.S. Bearing
42	042 209	042 209	R.S. Worm Bearing
43	043 109	043 109	Worm
44	044N109	044N109	R.S. Worm Bearing
44A	057 109	057 109	L.S. Worm Bearing
45	045N209	045N309	Worm Bearing Spring
46	046 209	046 309	Worm Gear
47	047 109	047 109	Line Guide
48	048 109	048 109	Pawl
50	050 209	050 209	Pawl Cover
58	058 209	058 209	Worm Shield
62	062 209	062 309	Slotted Post
63	063 209	063 209	Click Spring
64	064 209	064 309	Click Spring Screw
65	065 209	065 209	Idler Gear
66	066N209	066 309	Idler Gear Screw
67	067 209	067 209	Level Wind Drive Gear
69	069B600	069B600	Drive Gear Lock Spring
98	098 155	098 060	Click Button Retaining Spring
149	149 045	149 045	Gear Sleeve
149A	149 200	149 200	Clamp Nut (2 req.)
			Hex Nut (2 req.)